


Silgan White Cap 100

 The Silgan technical team
is very competent and
 able to find solutions.

Closure types

Suitable for all Twist-Off® and PT closure types with Ø 27 – 100 mm

Electrical requirements

230 V / 3.0 Amp.
400 V / 1.7 Amp.

Dimensions

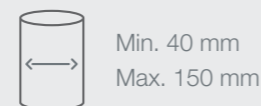
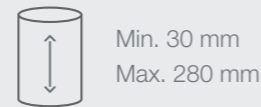
304 x 584 x 1200 mm

Weight

100 kg

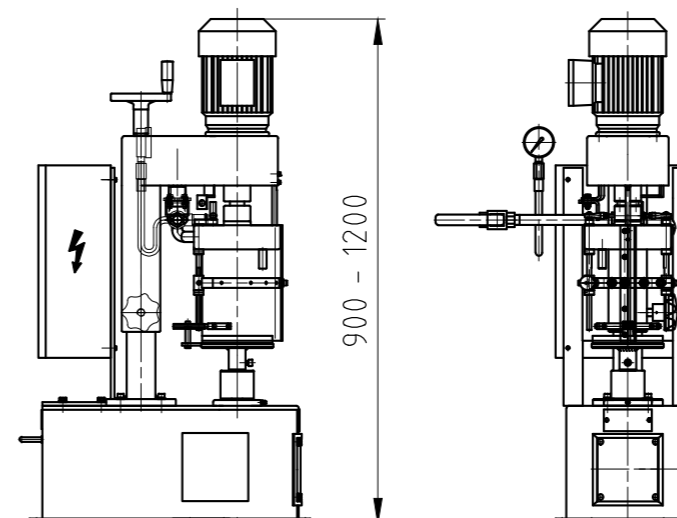
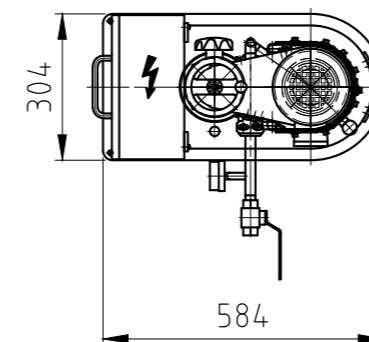
Steam requirements

Supply pressure min. 4 bar,
Operating pressure 1 bar



The Silgan White Cap 100 is a hand sealing machine for Twist-Off® and PT closures. It is ideal for low output rates of up to 8 jars per minute (approx. 400 jars per hour).

The jars and closures are placed in the machine by hand. By turning a control lever, a cone is lowered over the jar and steam is injected before sealing. A further turn of the control lever screws or presses the cap on and releases the sealed jar. The steam condensing in the sealed jar produces a vacuum similar to that of automatic sealing machines.



Features

- Mature technology
- Easy, simple installation
- Easy handling
- Long service life of the main parts
- Closure and jar headspace are steamed



Silgan White Cap 150

 When you have technological problems, we call them and Silgan gets back to us quickly –
 ★★★ either within half an hour or an hour.



The Silgan White Cap 150 is the perfect solution for flexible and safe production capping machines. It provides an alternative option to the standard cappers in terms of performance, shape and functionality – including Silgan engineering expertise and cutting-edge technology.

Features

- Output of 100 to 150 jars per minute
- Suitable for all Twist-Off® 27 to 100 mm diameter sealing food glass jars
- Complies with the latest hygiene standards
- Stainless steel
- CE-compliant

Electrical requirements

400 V
50 / 60Hz
2.5 kW

Steam requirements

5 – 8 bar
30 – 90 kg/h
R 3/4"

Steam supply line connection

R 3/4"
Exhaust pipe
Ø 150 mm minimum

Preferably soft water

R 1/4"
0.25 m³/h

Max. line speed

150 per min. for Twist-Off® and PT

Closure types

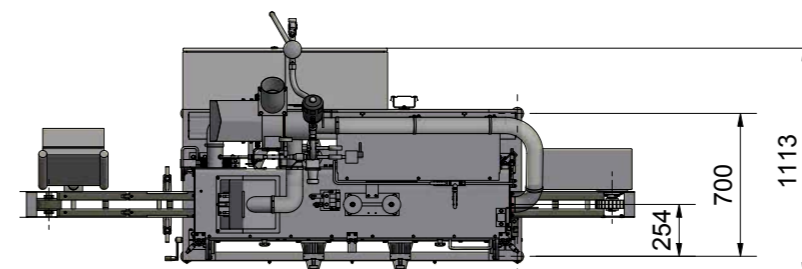
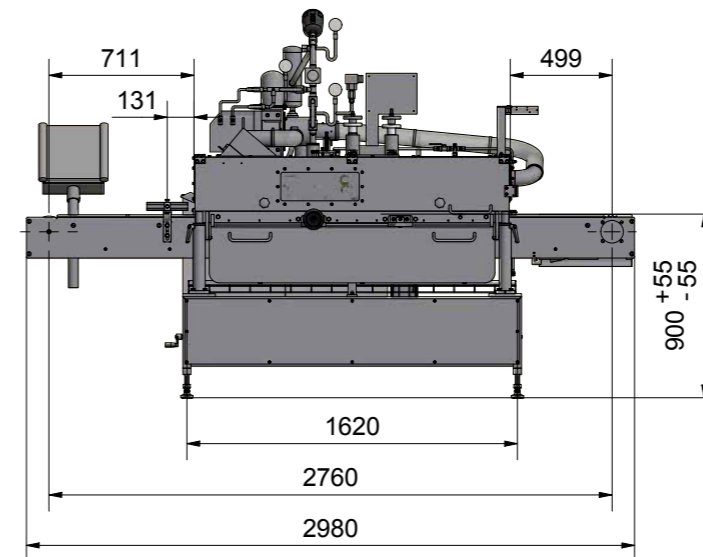
Suitable for all Twist-Off® & PT closure types with 27 – 100 mm




Min. 40 mm
Max. 300 mm



Min. 40 mm
Max. 160 mm



Silgan White Cap 200

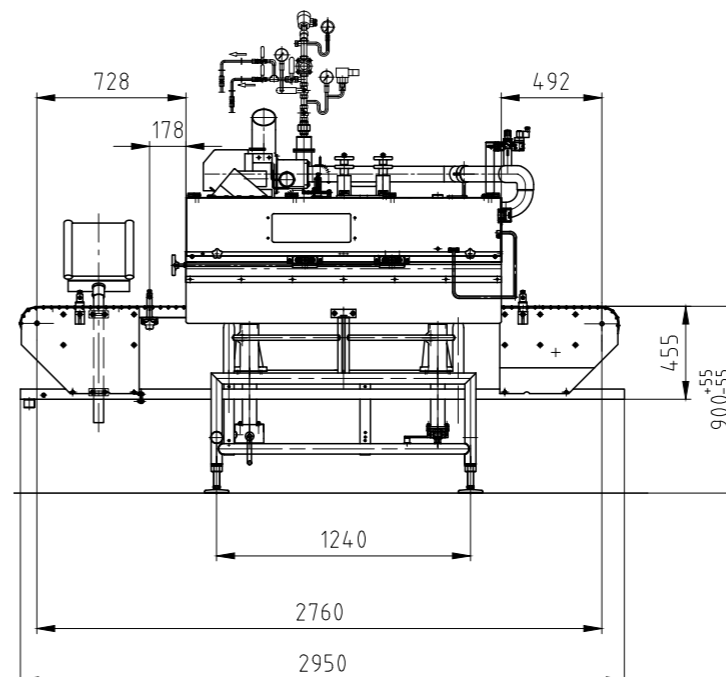
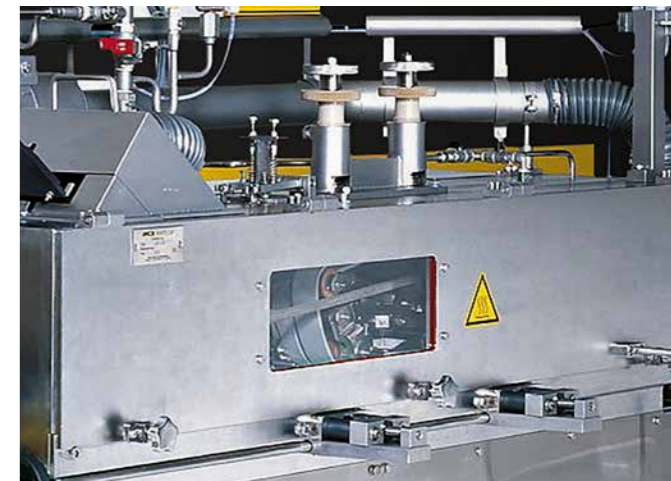
 They have extensive know-how. They have the ability to look ahead and understand the customer's needs from the point of view of technical specifications.

★★★

The Silgan White Cap 200 is the sophisticated technical solution for low and medium production speeds of up to 300 caps per minute.

Features

- Open frame made of top-quality stainless steel for optimal cleaning and minimum maintenance
- Capping rates of up to 300 jars per minute for Press-On® closures and Twist-Off® lug caps



Electrical requirements

400 V
50/60 Hz
2.5 kW

Steam requirements

5 – 8 bar
30 – 90 kg/h

Steam supply line connection

R 3/4"
Exhaust pipe
Ø 150 mm minimum

Preferably soft water

R 1/4"
0.25 m³/h

Max. line speed

300 per min. for PT
300 per min. for Twist-Off®

Closure types

Suitable for all Twist-Off®
& PT closure types with
27 – 100 mm



Min. 40 mm
Max. 280 mm



Min. 40 mm
Max. 160 mm

Silgan White Cap 300

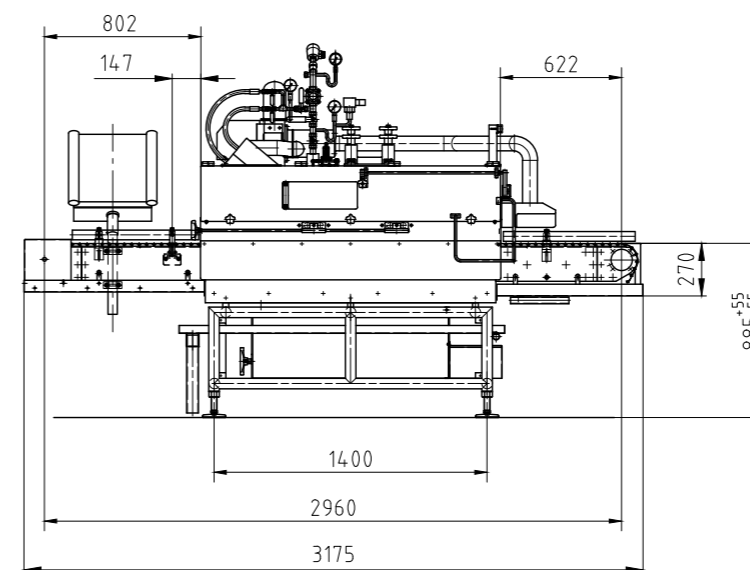
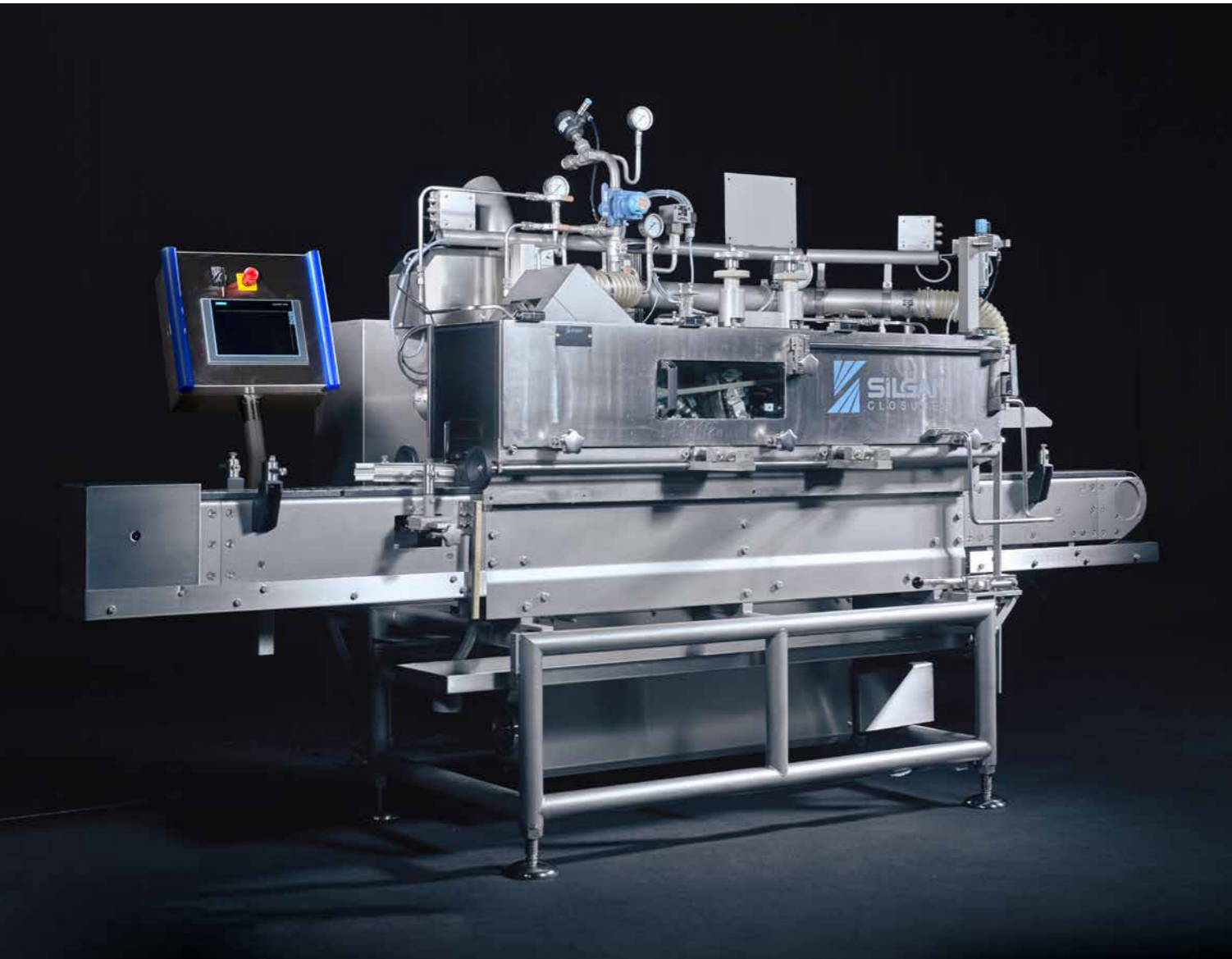


Silgan is excellent. We once had an issue with the settings of a capper machine, and that problem was resolved quickly and efficiently.

The Silgan White Cap 300 is ideal for line speeds of up to 300 Twist-Off® closures per minute with short change-over times. It is primarily designed for medium line speed ranges and processing products on several lines in parallel mode. Its open frame design with top-quality stainless steel ensures easy cleaning and minimum maintenance.

Features:

- Simple set-up and adjustment
- Small front door and integrated sliding door for easy access, rapid control, adjustment and cleaning
- Single-point attachment for shorter cap track, resulting in shorter change-over and maintenance times
- Machine head electronically adjustable to jar height
- Separate, synchronised drives for machine head and conveyor with frequency converter for speed control, and line speed synchronisation
- Available in right- or left-handed configuration



Electrical requirements

400 V
50/60 Hz
3.5 kW

Steam requirements

5 – 8 bar
30 – 90 kg/h

Steam supply line connection

R 3/4"
Exhaust pipe
Ø 150 mm minimum

Preferably soft water

R 1/4"
0.25 m³/h

Max. line speed

300 per min. for Twist-Off® and PT

Closure types

Suitable for all Twist-Off® & PT closure types with 27 – 100 mm



Min. 30 mm
Max. 300 mm

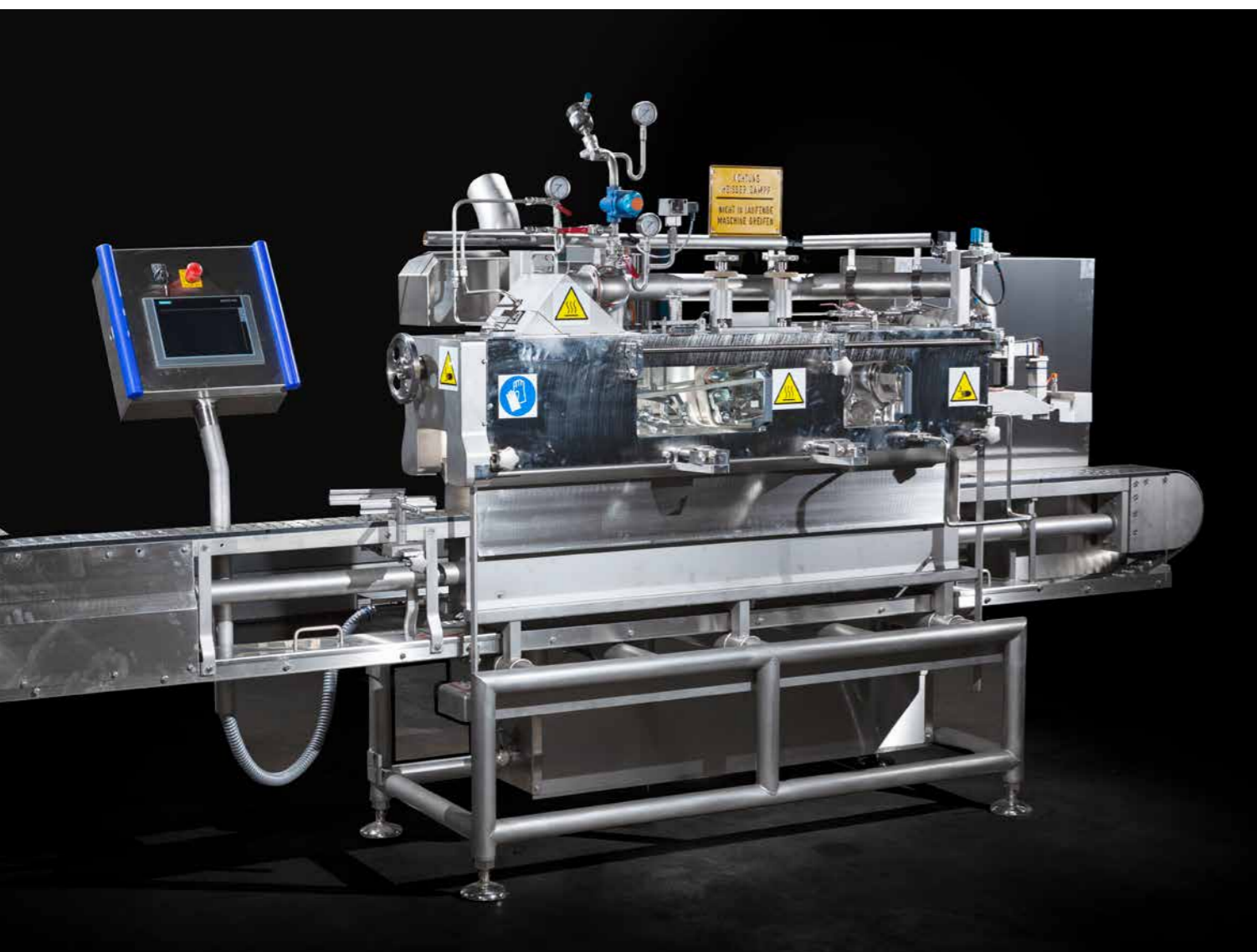


Min. 40 mm
Max. 160 mm

Silgan White Cap 500-1



I am pleased with the overall service and care for the client.
 When I call Silgan, someone almost always picks up right away.
 If I leave a voice message, I get a response the same day.



The Silgan White Cap 500-1 is ideal for capping at medium to higher speeds of up to 500 jars or bottles per minute. It is the perfect combination of the machine concept „hygiene, cleanliness and reliability“. This further development of the Type 500 has an open frame design made of top-quality stainless steel for optimal cleaning and minimum maintenance. Its larger base area, extended machine bed and two-point head clamp provide perfect stability.

Features:

- Less maintenance and lower noise levels due to new cam belt drive for sealing and side belts
- Split lower cap track for easier set-up and adjustment to different closure diameters
- Separate lateral drag arm for optimised capping rate
- Sliding doors for easier access
- Electronic adjustment to different jar heights
- Frequency converter for speed control
- Available in right- or left-handed configuration

Electrical requirements

400 V
 50/60 Hz
 5.5 kW

Steam requirements

5 – 8 bar
 30 – 90 kg/h

Steam supply line connection

R 3/4"
 Exhaust pipe
 Ø 150 mm minimum

Preferably soft water

R 1/4"
 0.25 m³/h

Max. line speed

500 per min. for Twist-Off®
 and for PT

Closure types

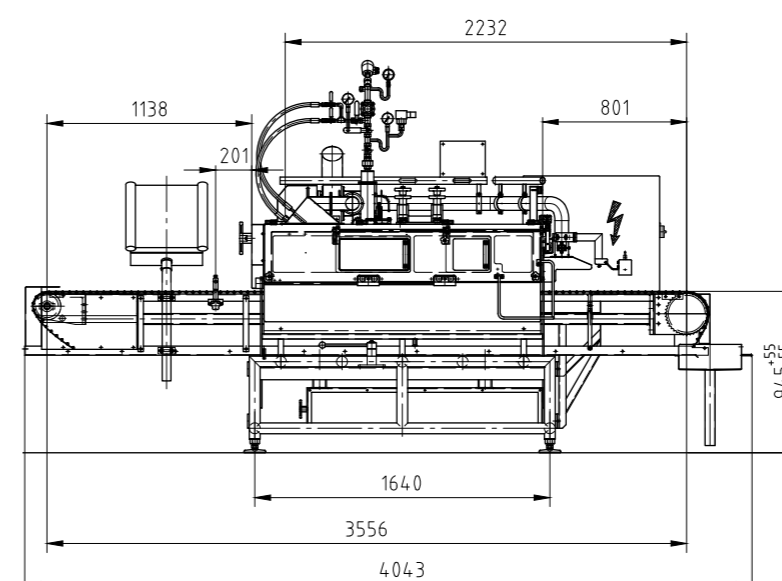
Suitable for all Twist-Off®
 & PT closure types with
 27 – 100 mm




Min. 30 mm
 Max. 300 mm



Min. 40 mm
 Max. 160 mm



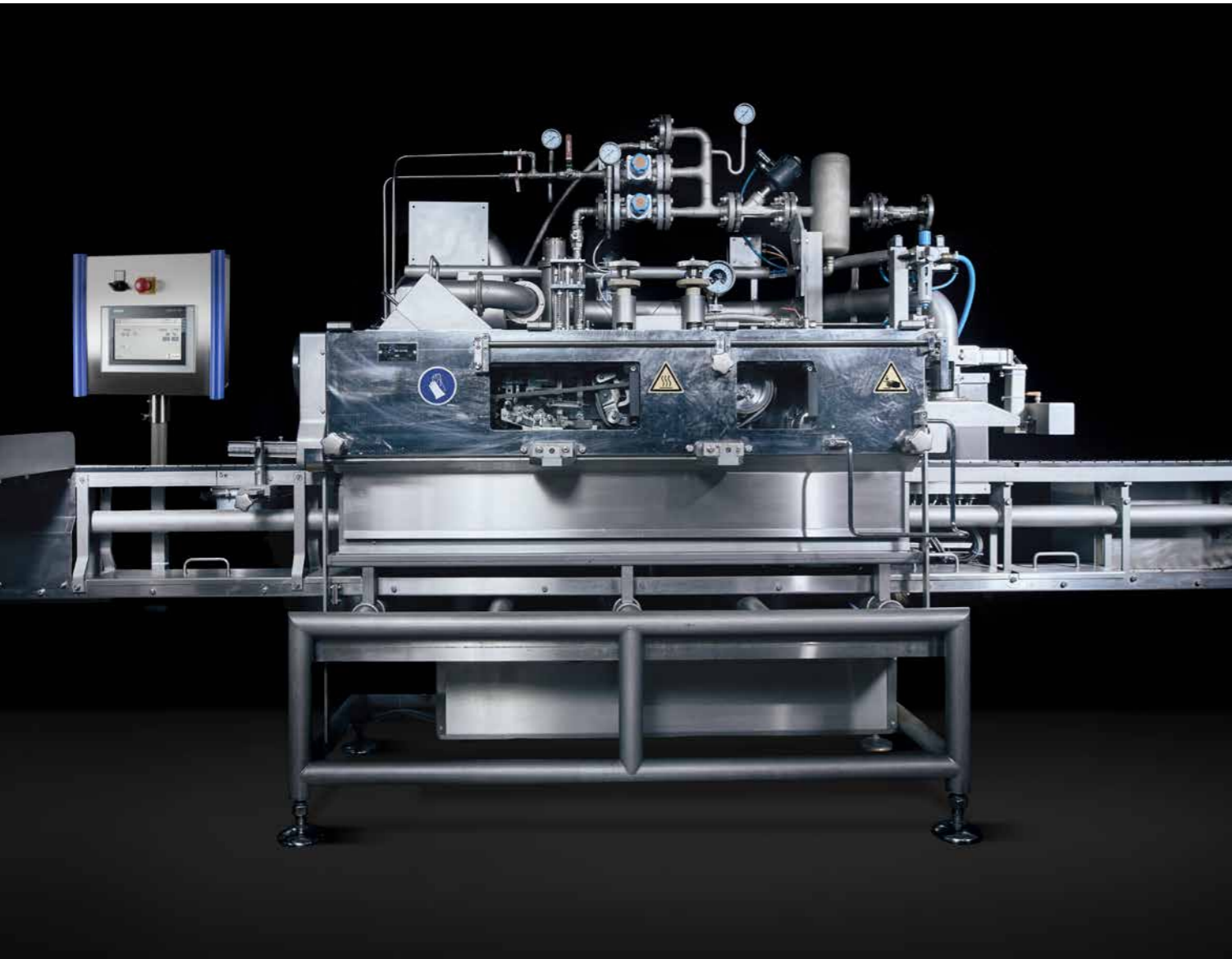
Silgan White Cap 600-1

 Silgan always responds to a complaint right away, and they try to solve and fix it as quickly as possible.
★★★

The Silgan White Cap 600-1 provides just the right machine concept for all customers with stringent requirements in respect of capping performance and efficiency as well as hygiene and cleanliness. It is ideally suited for fast line speeds of up to 1000 PT closures per minute and enables capping rates of up to 850 jars per minute for Twist-Off® lug caps.

Features:

- Open frame design with top-quality stainless steel for optimal cleaning and minimum maintenance
- Quick change-over and easy set-up
- Electronic adjustment to different jar heights
- Completely new electrical components: smaller electrical cabinet, touch panel, servo drive, IE5-classified
- Available in right- or left-handed configuration



Electrical requirements

400 V
50/60 Hz
7.5 kW

Steam requirements

5 – 8 bar
50 – 120 kg/h

Machine connection

DN25
Exhaust pipe
Ø 150 mm minimum

Preferably soft water

R 1/4"
0.25 m³/h

Max. line speed

1.000 per min. for PT
850 per min. for Twist-Off®

Closure types

Suitable for all Twist-Off® & PT closure types with 27 – 100 mm



Min. 40 mm
Max. 300 mm



Min. 40 mm
Max. 160 mm

